

\$348,888 - 4029 Orchards Drive, Edmonton

MLS® #E4442429

\$348,888

3 Bedroom, 2.50 Bathroom, 1,218 sqft

Condo / Townhouse on 0.00 Acres

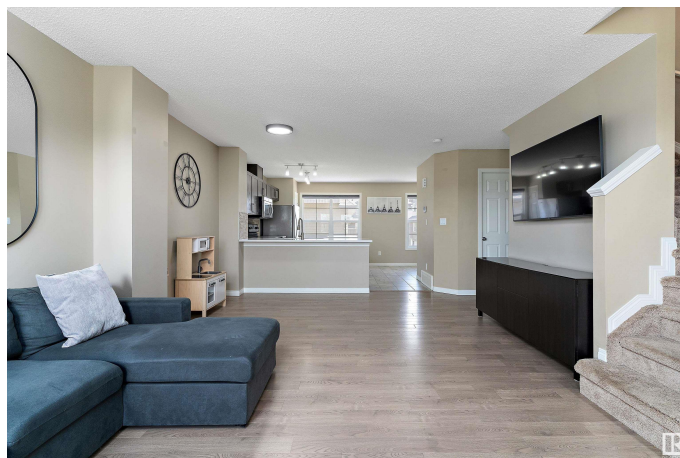
The Orchards At Ellerslie, Edmonton, AB

Behold, this bright and beautiful 3-bedroom at The Grove Townhome in the community of The Orchards At Ellerslie. Offering a 1,217 sq ft of open-concept living, filled with natural light, a private fenced yard with a natural gas BBQ hookup and fronting onto a park, walking path and green space. You'll love the modern layout, spacious kitchen with quartz countertops, stainless steel appliances and double attached garage for ultimate convenience. Located in one of Edmonton's most sought-after communities, you're just minutes from the airport, schools, public transit, shopping and The Orchards Residents Association clubhouse which includes a skating rink, splash park, tennis and basketball courts, playground, and year-round community programming. Whether you're a young family, first-time buyer, or savvy investor—this home checks all the boxes. Move-in ready, stylish, and in a vibrant neighbourhood with ample visitor parking—this one is a must-see!

Built in 2014

Essential Information

MLS® #	E4442429
Price	\$348,888
Bedrooms	3
Bathrooms	2.50



Full Baths	2
Half Baths	1
Square Footage	1,218
Acres	0.00
Year Built	2014
Type	Condo / Townhouse
Sub-Type	Townhouse
Style	2 Storey
Status	Active

Community Information

Address	4029 Orchards Drive
Area	Edmonton
Subdivision	The Orchards At Ellerslie
City	Edmonton
County	ALBERTA
Province	AB
Postal Code	T6X 1V2

Amenities

Amenities	Off Street Parking, On Street Parking, Closet Organizers, Club House, Front Porch, Hot Water Electric, No Animal Home, No Smoking Home, Parking-Extra, Parking-Visitor, Racquet Courts, Recreation Room/Centre, Tennis Courts, Natural Gas BBQ Hookup
Parking Spaces	2
Parking	Double Garage Attached

Interior

Interior Features	ensuite bathroom
Appliances	Dishwasher-Built-In, Dryer, Fan-Ceiling, Garage Control, Garage Opener, Microwave Hood Fan, Refrigerator, Stove-Countertop Electric, Washer
Heating	Forced Air-1, Natural Gas
Stories	2
Has Basement	Yes
Basement	None, Partially Finished

Exterior

Exterior	Wood, Vinyl
Exterior Features	Airport Nearby, Back Lane, Fenced, Golf Nearby, Low Maintenance

Landscape, Paved Lane, Picnic Area, Playground Nearby, Public Transportation, Recreation Use, Schools, Shopping Nearby

Roof	Asphalt Shingles
Construction	Wood, Vinyl
Foundation	Concrete Perimeter

School Information

Elementary	DIVINE MERCY CATHOLIC SCH
Middle	FATHER MICHAEL MIREU CATH
High	SHAUNA MAY SENECA SHOOOL

Additional Information

Date Listed	June 13th, 2025
Days on Market	16
Zoning	Zone 53
HOA Fees	449.99
HOA Fees Freq.	Annually
Condo Fee	\$259

DATA IS DEEMED RELIABLE BUT IS NOT GUARANTEED ACCURATE BY THE REALTORS® ASSOCIATION OF EDMONTON. COPYRIGHT 2025 BY THE REALTORS® ASSOCIATION OF EDMONTON. ALL RIGHTS RESERVED. Trademarks are owned or controlled by the Canadian Real Estate Association (CREA) and identify real estate professionals who are members of CREA (REALTOR®, REALTORS®) and/or the quality of services they provide (MLS®, Multiple Listing Service®)

Listing information last updated on June 29th, 2025 at 8:02am MDT